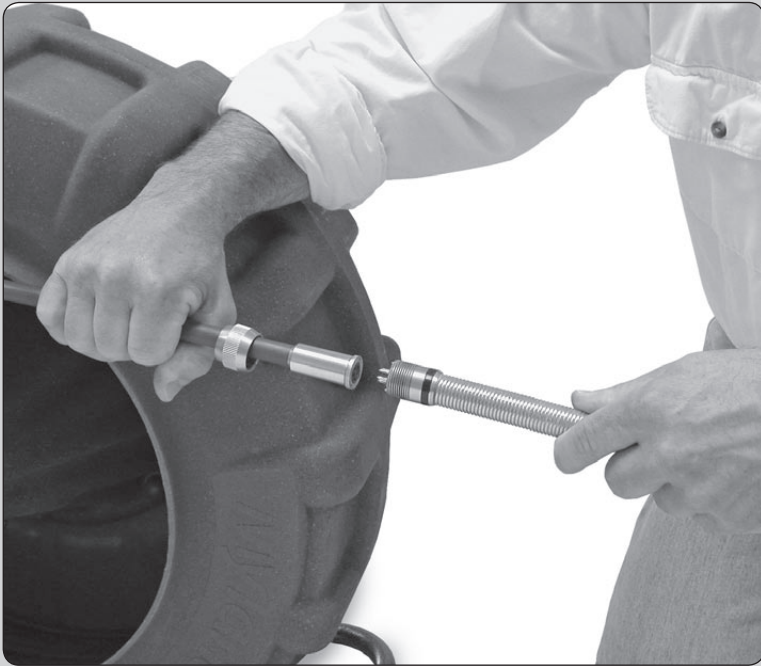


Installing the Camera head on the front of the Pushrod

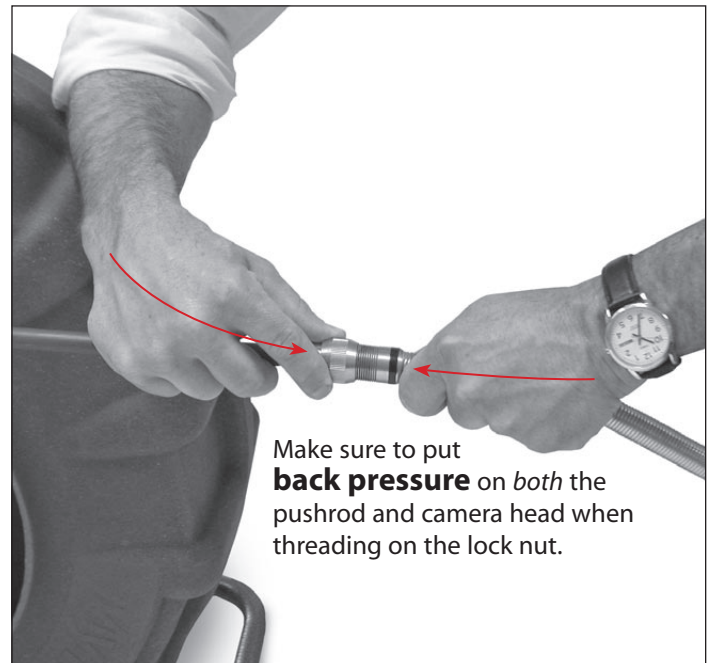
IMPORTANT!!

1. Align power pins (male) and the pushrod (female). Make sure to push the camera head ALL the way into the front end of the pushrod so that all 4 power pins are fully engaged and the 2 guide pins are also in place. There should be NO gap.



2. Keep the camera head pushed snugly against pushrod while threading lock nut onto camera.

3. Make sure that a gasket (seal) is between the camera head and pushrod.



WARNING: If the camera head moves forward and away from the end of the pushrod, it can turn with the lock nut and break the power pins at the back of the camera head.

Pushrod connector
(female)



Power Pins
(male: 4)

Guide Pins (2)

